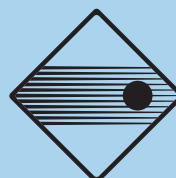


# BARBIERI Color Management

## Profile-Xpert

Professional ICC profile creation software tools



**BARBIERI**  
electronic  
When Color Quality counts

## Profile-Xpert

### Use

BARBIERI Profile-Xpert is a set of modular software tools for professional color management in digital imaging.

### Profile-Xpert Display

Application for calibrating and profiling any type of **display** (Crt and LCD).

Users can set the white point to standard values, a wide range of Kelvin values, or measure a viewing light and calibrate to it. A wide range of gammas is supported. After the profile is created, resulting curves show the display calibration and provide the option for additional adjustment.

### Profile-Xpert Scan

Application for creation of **scanner** ICC profiles.

Profile-Xpert scan is a Photoshop plug-in filter that will create a scanner profile from any standard ANSI IT8.7 target (reflective and transmissive) from Kodak, Fuji or Agfa.

### Profile-Xpert Print3C

Application for creating **RGB output device** ICC profiles.

Profile-Xpert Print3C uses the measurement file and the target definition to create a profile, establishing in the profile an equivalence between the RGB device values and the actual colors printed by the device.

When saving the profile, the user can select the default rendering intent and populate all the descriptor fields defined in a ICC profile.

### Profile-Xpert Print4C

Application for creating **CMYK output device** ICC profiles

Profile-Xpert Print4C is in many ways identical to Profile-Xpert Print3C. In addition to all of the many features described above, the CMYK application (Print4C) offers a very complete range of ink utilization parameters to control: total ink limit; maximum black; black starting point; black curve shape; GCR in grays; and GCR in colors.

Profile-Xpert Print4C has all the same great features of Profile-Xpert Print3C.

### Technical data

#### System requirements

- Color monitor 15" or larger
  - Serial interface or USB
- Macintosh: System 10.2 or higher  
PC: Microsoft® Windows® 2000 or higher

#### Supported Instruments for Display profiling:

##### Macintosh

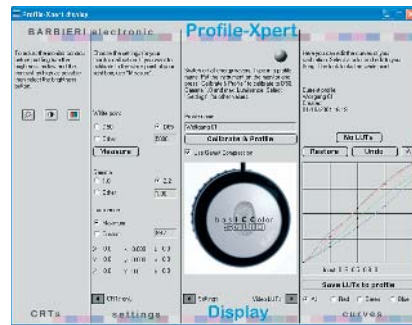
- BasIColor SQUID
- Sequel Chroma 4 ADB and USB

##### PC

- BasIColor SQUID
- Sequel Chroma 4 serial and USB

#### Supported Instruments for Output profiling:

- Barbieri DTP 1150
- Barbieri Spectro 50xy
- Barbieri Spectro 100xy



Profile-Xpert Display



Profile-Xpert Scan



Profile-Xpert Print3C and Print4C